

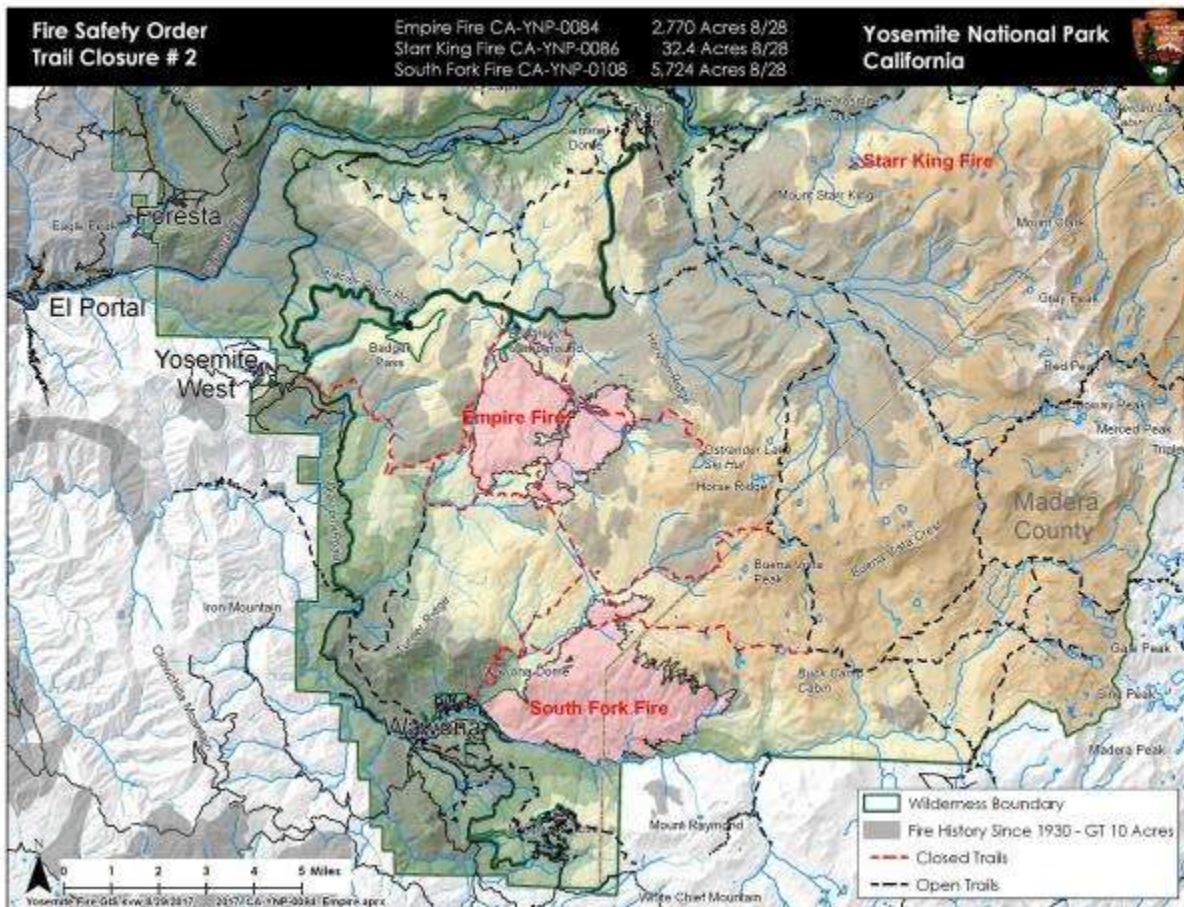


- [Snow Reports](#)
- [Snow Forecasts](#)
- [Video](#)
- [Gear](#)

Search

Yosemite National Park, CA is on Fire | Highway 41 & Glacier Point Rd. CLOSED

Firebrains | August 30, 2017 [Fire](#)



Trials currently closed in Yosemite.

Yosemite National Park in California is on fire.

6 Fires are currently burning in and very near the park:

- **Railroad Fire = 1,000 acres**
- **South Fork Fire = 5,191 acres**
- **Empire Fire = 4,125 acres**
- **Starr King Fire = 32 acres**
- **Porcupine Fire = 2.2 acres**
- **Yosemite Creek Fire = .75 acres**
- **Knob91 Fire = .39 acres**

Highway 41 between Oakhurst & Yosemite is closed.

Glacier Point Road is closed.

Many trails are closed.

Mandatory evacuations are in place for the community of Sugar Pine and Sugar Pine Camp with an evacuation advisory for the community of Fish Camp.

RAILROAD FIRE:



Railroad fire on 8/29/17.

Approximate Location

37.434 latitude, -119.651 longitude

Incident Overview

Railroad Fire, Sierra National Forest (NF), California.

The Railroad Fire started August 29, 2017 at approximately 1300 hrs. West of Highway 41, near the community of Sugar Pine, South of Yosemite National Park and Fish Camp.

It is a vegetation fire burning on the Sierra NF. The fire is burning in steep terrain, with difficult access and heavy fuel loading. Potential for this fire is high.

Mandatory evacuations are in place for the community of Sugar Pine and Sugar Pine Camp with an evacuation advisory for the community of Fish Camp.

There are 100 structures threatened.

Highway 41 is in a hard closure from Westphal to the South entrance to Yosemite National Park. Yosemite visitors are to use Highway 49 and Highway 140 for entrance to the National Park.

Presently the fire has consumed approximately 1000 acres and is 5% contained, cause of the fire is under investigation.

Resources on this fire consist of 26 Fire Engines, 7 Hand Crews, 3 Helicopters, 10 Air Tankers

Total Personnel: 350

Assisting Agencies: CAL FIRE, Madera County Sheriffs Office and Madera County Fire.

Additional resources are on order.

Tomorrow at approximately 1000hrs a Type 2 Incident Command Team (IMT), will take over the incident command from the Sierra NF.

Basic Information

Current as of	8/29/2017, 9:49:48 PM
Incident Type	Wildfire
Cause	Unknown
Date of Origin	Tuesday August 29th, 2017 approx. 01:00 PM
Location	West of Highway 41, near the community of Sugar Pine
Incident Commander	Sierra National Forest

Current Situation

Total Personnel	350
Size	1,000 Acres
Percent of Perimeter Contained	5%
Fuels Involved	Brush and Timber

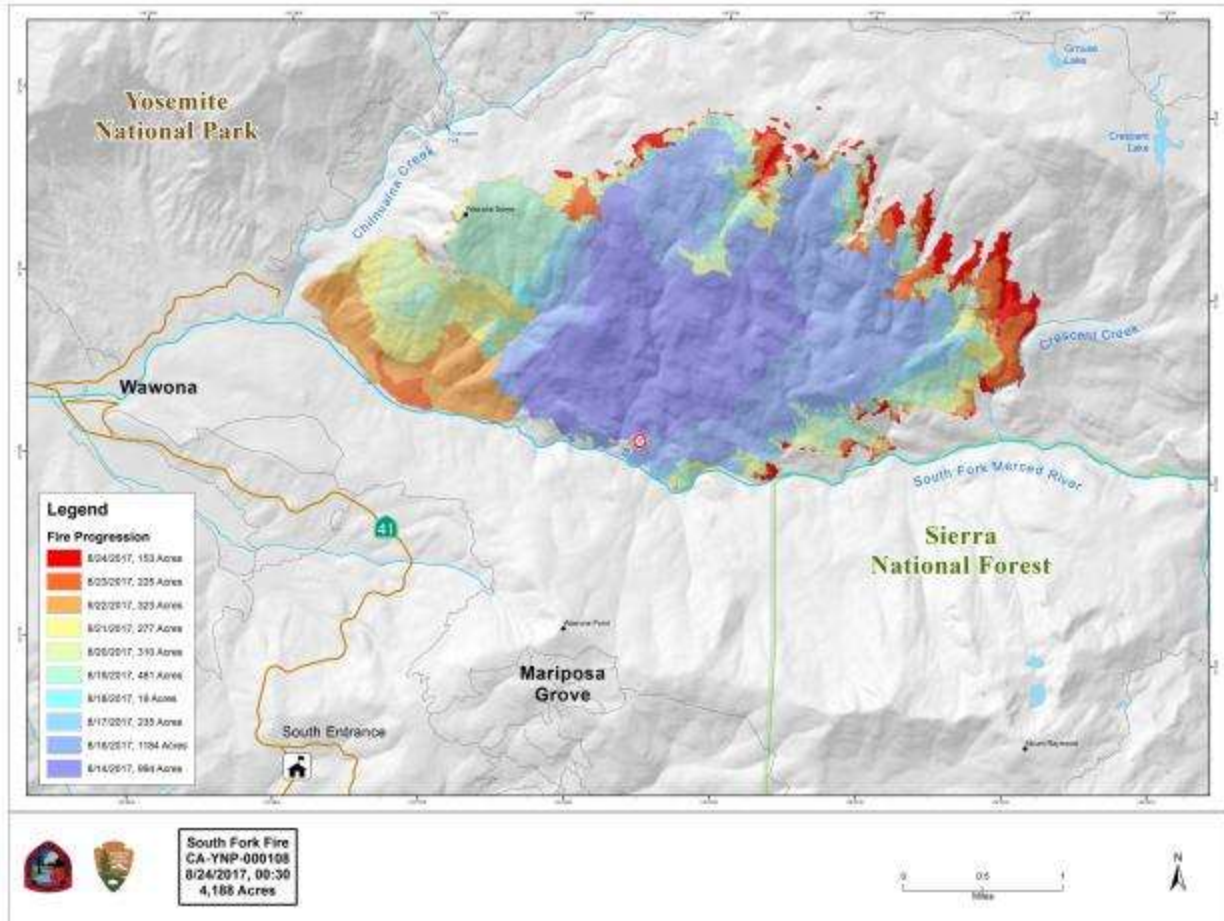
SOUTH FORK FIRE:



photo of South Fork Fire on 8/22/17.

Approximate Location

37.538 latitude, -119.598 longitude



Map of South Fork Fire.

Incident Overview

The north flank of the fire was the most active yesterday as it burned into heavy pockets of fuel. The south and west flanks of the fire are contained, some smoke will be visible as logs and brush burn in the interior. Crews will continue to patrol and monitor the flanks closest to the community of Wawona and Mariposa Grove. Crews are continuing containment strategies on the north-west edge of the fire and to keep fire south and south-east of Chilnualna Creek. The north and east flank of the fire is continuing to burn in the wilderness, and will be monitored by aircraft due to inaccessible and steep terrain. As fire continues into the high country it will hit some pockets of heavy vegetation with little fire history but slow down with natural granite barriers and sparse vegetation which will limit smoke production. This high country wilderness area has few high values at risk.

Basic Information

Current as of	8/29/2017, 2:47:32 PM
Incident Type	Wildfire
Cause	Unknown
Date of Origin	Sunday August 13th, 2017 approx. 02:30 AM

Location .75 mile east of the community of Wawona
Incident Commander Ty Crowe IC3
Incident Description Suppression

Current Situation

Total Personnel 101
Size 5,191 Acres
Percent of Perimeter Contained 44%
Fuels Involved Timber (Litter and Understory) Brush (2 feet)
The following trail and area closures are in place until further notice:

- The Swinging Bridge Trail on both the north and south sides of the South Fork of the Merced River.
- The Chilnualna Falls Trail from Wawona Trailhead to the top of Chilnualna Falls.
- The two mile connecting trail heading north from the top of Chilnualna Falls to the intersection of the Buena Vista Trail.

Significant Events •The Chilnualna Creek Trail from the top of Chilnualna Falls east to the intersection of the Buena Vista and Buck Camp trails (Just east of Johnson Lake).

- Turner Meadow Trail
- Turner Meadow intersection east to Buena Vista trail
- Off-trail areas in the vicinity of the South Fork Fire Area, including the swimming holes north of Chilnualna Creek.
- All climbing routes on and around Wawona Dome are closed.

Outlook

Planned Actions Mop up and suppression repair on the west flank of the fire. Monitor and check the fire spread near the S. fork of the Merced River on the SE side of the fire. Monitor fire spread on the north and east flanks.

Remarks Crews continue to hot spot and cold trail the southeast portion (Div J) in an effort to halt the eastern spread of the fire. Weather is forecasted to get hotter and drier with expected increases in fire behavior until the high pressure system moves out and clouds and moisture move over fire area. The fire is located in the South Fork of the Merced River, with very steep and inaccessible terrain.

Current Weather

Weather Concerns

A strong upper level ridge of high pressure centered over the Great Basin will continue to bring well above normal temperatures and light, terrain-driven winds to the fire through Tuesday with little diurnal change in humidity. A southwesterly flow aloft will become established over the fire by this afternoon and remain westerly through midweek as a weak upper level trough passes by to our north. Although a few thunderstorms could pop up over the higher elevations of Yosemite Tuesday and Wednesday, they will remain well east of the fire.

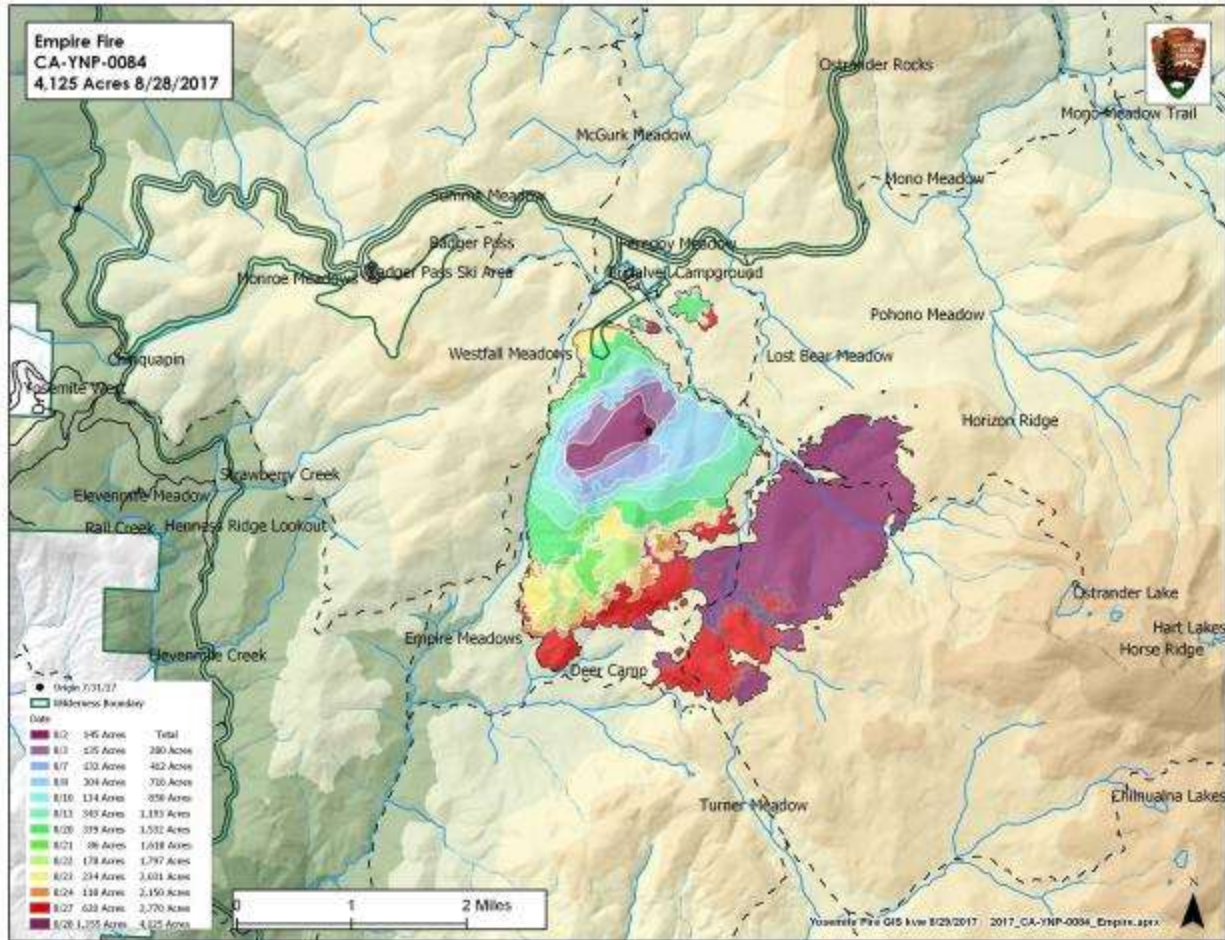
EMPIRE FIRE:



Empire Fire on 8/29/17.

Approximate Location

37.644 latitude, -119.618 longitude



Map of Empire Fire 8/29/17.

Due to a very dry air mass fire activity increased yesterday on the eastern flanks of the fire burning in heavy pockets of down and dead vegetation. The west and northwest flanks of the fire are contained and showed minimal activity. Fire crews are implementing a perimeter control strategy for the north, west, and southern flanks of the fire to protect Bridalveil Campground, Yosemite Ski and Snowboard Area, Yosemite West subdivision, Wawona Road (Highway 41), and Glacier Point road. Strategy for the east flank of the fire is to steer fire east deeper into the wilderness where there is sparse vegetation and natural granite barriers which will slow spread and limit smoke production. This high country wilderness area is very steep and rugged and has few high values at risk.

Fire management personnel is implementing this strategy on three sides of the fire to limit further smoke production in heavy fuels..

Today crews will be working to secure the Deer Camp trail from Alder Creek east for 3/4 of a mile. Glacier Point road is closed to the public due to fire fighter safety to conduct tree felling and vegetation clearance. Additional crews and engines are on order to support these operations.

Basic Information

Current as of 8/29/2017, 2:04:58 PM
Incident Type Wildfire
Cause Lightning/natural
Date of Origin Tuesday August 01st, 2017 approx. 08:45 AM
Location 1 Mile east of Badger Pass Ski Area, directly adjacent to Bridalveil Crk. Campground Bridalveil in Yosemite's Wilderness
Incident Commander Tom Garcia, ICT3
Incident Description Management

Current Situation

Total Personnel 75
Size 4,125 Acres
Percent of Perimeter Contained 40%

Fuels Involved Red Fir Timber (Litter and Understory), Dormant Brush, Hardwood Slash
Pockets of green leaf manzanita and chinquapin brush as well as heavy dead and down material
The following trail and area closures are in place until further notice:

- Glacier Point Road
- Bridalveil Campground
- Ostrander Trail

Significant Events

- Bridalveil Trail
- Alder Creek Trail
- Mono Meadow Trail
- Turner Meadow Trail

All closed trailheads and junctions will be posted with a trail closure order and map.

Outlook

Continue to implement firing operations from the area of Turner Meadow Junction toward Deer Camp

with the intention of tying the firing operation into Deer Camp and securing the southern flank of the

Planned Actions

fire to the western flank of the fire by end of shift 8/31/17. Continue to monitor and secure the northern

flank of the fire above the Bridalveil Creek Campground. Continue to check up and secure the perimeter

of the 50 acre spot fire to the east of Bridalveil Creek Campground.

12 hours: Begin firing on the south flank from the area of Turner Meadows toward Deer Camp

24 hours: Continue firing operation on the south flank from the area of Turner Meadows toward Deer Camp.

Projected Incident Activity

48 hours: Complete all firing operations by end of shift hold line and monitor fire.

72 hours: Continue to reevaluate fire behavior hold and monitor fire . Crews will be strategically positioned to monitor fire and allow the fire to naturally progress east further into the wilderness.

Current Weather

A strong upper level high pressure center over the great basin

will continue to bring above normal temperatures and light,

Weather Concerns

terrain-driven winds to the district through the weekend with little diurnal change in humidity's. A weak system moving through

Northern California will slightly cooler temperatures by a few

degrees on Wednesday. There is a slight chance of afternoon/early

evening thunderstorms over the higher elevations of the southern Sierra Nevada through Thursday.

ALL FIRES IN YOSEMITE:

by Yosemite National Park

Fire Update August 29th, 2017

August 29, 2017 Posted by: Yosemite Fire Information

There are multiple fires burning in Yosemite National Park's wilderness. Smoke will be present due to a high pressure system which brings higher temperatures and lower relative humidities. Thunderstorms are possible over the high country. Thunderstorms bring gusty winds and hazardous lightning.

South Fork

Discovered: 8/13/17
Location: N 37°32 '15" x W 119° 35'54"
Size: 5,724 acres
Cause: Unknown
Fuels: Ponderosa Pine/White Fir
Strategy: Suppression
County: Mariposa

The north flank of the fire was the most active yesterday as it burned into heavy pockets of fuel. The south and west flanks of the fire are contained, some smoke will be visible as logs and brush burn in the interior. Crews will continue to patrol and monitor the flanks closest to the community of Wawona and Mariposa Grove. Crews are continuing containment strategies on the north-west edge of the fire and to keep fire south and south-east of Chilnualna Creek. The north and east flank of the fire is continuing to burn in the wilderness, and will be monitored by aircraft due to inaccessible and steep terrain. As fire continues into the high country it will hit some pockets of heavy vegetation with little fire history but slow down with natural granite barriers and sparse vegetation which will limit smoke production. This high country wilderness area has few high values at risk.

Area and trail closures are in place follow posted closure orders and maps.

Empire

Discovered: 8/1/17
Location: N 37° 38.673' x W 119° 37.096' at roughly 7300 feet elevation, 1 mile east of Yosemite Ski and Snowboard Area and 3/4 mile south of Glacier Point Road

Size: 4,125 acres
Cause: Lightning
Spread Potential: Moderate
Fuels: Red fir
Strategy: Monitor
County: Mariposa

Due to a very dry air mass fire activity increased yesterday on the eastern flanks of the fire burning in heavy pockets of down and dead vegetation. The west and northwest flanks of the fire are contained and showed minimal activity. Fire crews are implementing a perimeter control strategy for the north, west, and southern flanks of the fire to protect Bridalveil Campground, Yosemite Ski and Snowboard Area, Yosemite West subdivision, Wawona Road (Highway 41), and Glacier Point road. Strategy for the east flank of the fire is to steer fire east deeper into the wilderness where there is sparse vegetation and natural granite barriers which will slow spread and limit smoke production. This high country wilderness area is very steep and rugged and has few high values at risk.

Fire management personnel is implementing this strategy on three sides of the fire to limit further smoke production in heavy fuels.

Area and trail closures are in place including: Glacier Point road, Bridalveil Campground, and multiple trail closures.

Starr King

Discovered: 8/2/17
Location: N 37° 42.965' x W 119° 29.588' at approximately 7800 feet elevation
Size: 27.5 acres
Cause: Lightning
Spread Potential: Low/ Moderate
Fuels: Red fir/ Lodgepole
Strategy: Monitor
County: Mariposa

Activity has picked up and smoke will be visible from Glacier Point, Washburn Point, and Sentinel Dome.

Yosemite Creek

Discovered: 8/3/17
Location: N 37° 50.414' x W 119° 38.088' at approximately 7,970 feet elevation
Size: .75 acres
Cause: Lightning
Spread Potential: Low
Fuels: Red fir


Strategy: Monitor
County: Mariposa

Porcupine

Discovered: 8/2/17
Location: N 37° 49.336' x W 119° 34.720' at approximately 8154 feet elevation off Tioga road near Yosemite Creek Campground road, creeping and smoldering, burning in large logs which are creating smoke.
Size: 2.2 acres
Cause: Lightning
Spread Potential: Low
Fuels: Lodgepole/Red fir
Strategy: Monitor
County: Mariposa

Knob 91

Discovered: 8/4/17
Location 37° 52.185' x W 119° 35.217' at approximately 8980 feet elevation
Size: .39 acres
Cause: Lightning
Spread Potential: Low
Fuels: Timber litter
Strategy: Monitor
County: Mariposa

Posted by  [Firebrains](#) | August 30, 2017

Related Articles

4 thoughts on “Yosemite National Park, CA is on Fire | Highway 41 & Glacier Point Rd. CLOSED”

1.  **Jean** says:

[September 1, 2017 at 7:38 pm](#)

I think that you meant ‘ Trails are closed in Yosemite.’

+1 (1 vote)

[Reply](#)

1.  **Anonymous** says:

[September 3, 2017 at 2:13 pm](#)

I saw that too, LOL. Someone didn't proofread..

0 (0 votes)

[Reply](#)

2.  **cELlery Blackrock** says:

[September 2, 2017 at 10:53 am](#)

I saw the original Yosemite Firefall.

+1 (1 vote)

[Reply](#)

Leave a Reply

Your email address will not be published.

Comment

Name

Email

Website

Notify me of follow-up comments by email.

Notify me of new posts by email.

About the author



Firebrains

Get SnowBrains daily deals on ski gear:

Shop Now

Share your story:

Submit A Link

- [Home](#)
- [Authors](#)
- [About](#)
- [Contact](#)
- [Privacy Policy](#)
- [Site Map](#)